

Bollinbrook CE Primary's Christian Vision, Ethos and Values



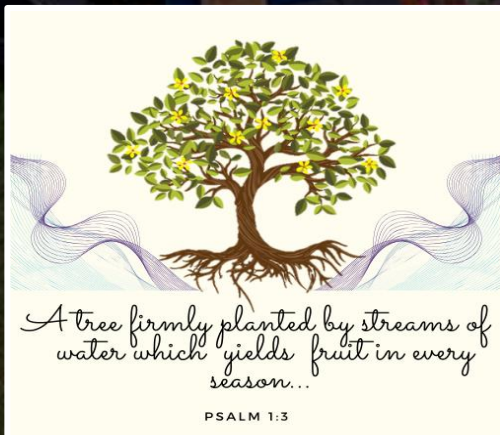


*A tree firmly planted by streams of
water which yields fruit in every
season...*

PSALM 1:3

OUR VISION :

is based on 3 key bible verses :



Our vision and values have grown from working together as a school community with views of our staff, governors, children and parents / carers. A worship week in the summer term of last academic year 2018-9 allowed our families to share their views on our values. Building on our core values of Honesty, Respect and Love which are rooted in all we do, we grew our gospel values of Kindness, Patience, courage, being Servant- Hearted, generosity.

A global learning twilight supported us in thinking about Courageous Advocacy; giving our children a voice and how they can bring change in their local, national and global communities. This is a thread throughout our curriculum.

We began the 2019 academic year with a visioning day led by Jen McIlveen from Chester Diocese and looked at how as school we were laying down deep roots which will help all in our school community to flourish.



‘like a tree firmly planted by streams of water which yields its fruit..’ Psalm 1v3

The stream represents Jesus as the source. He is the way, the truth and life. Jesus is our river of life and he flows through all that we do in Bollinbrook.

And the child grew and became strong in spirit..’ Luke 2v40

- ▶ If rooted in Christ, children can **grow** into who they were created to be. As they move through school, our children will acquire the knowledge and skills to help them grow.

..'go and bear fruit, fruit that will last'

John 15v16

We will ensure our children bear fruit that will help them to be READY for the next stage in their journey. We place strong emphasis on our gospel values of Kindness, Patience, Courage, Generosity and Being Servant-Hearted.

OUR CORE CHRISTIAN VALUES



OUR GOSPEL VALUES



GOVERNOR VALUE



'ROOTED AT THE HEART OF ALL WE DO'

A warm, golden sunset over a calm body of water. The sun is low on the horizon, creating a bright reflection on the water's surface. In the foreground, a series of footprints are visible in the wet sand, leading from the bottom left towards the water. The overall atmosphere is peaceful and contemplative.

Our Governors' value:

Faithfulness

Faithfulness, a fruit of the Spirit, can be a challenging trait to possess. **Faithfulness** comes from a place of trust and loyalty. ..

OUR ETHOS:

‘Our Bollinbrook family ensures that all members of our school community feel welcome, safe and valued. Relationships at Bollinbrook CE Primary are built on our Christian values of Honesty, Respect and Love’

Our Distinctive Christian ethos supported by St Michael’s Church and the Diocese of Chester, ensures all our children have the opportunity to develop a sense of belonging and responsibility to our school community and wider world.

Children develop a love of learning that supports their academic, emotional and spiritual growth. We support our children to be ‘READY’ so they will; *‘Go and bear fruit - fruit that will last.’ John 15.16*



Our children love,
learn and grow in a
supportive
environment and
ready for future
challenges

Our staff are
aspirational, inspire
children and help
them to grow by
creating positive and
valuable changes



St Michael's church:
Inclusive, nurturing
and supportive

Our Mission

Our wider
community:
Supporting and
engaging



Bollinbrook CE
Governors: faithful,
strategic and
accountable

Our Parents / Carers:
partners in learning;
informed, included
and involved in all
aspects of school life



Educational Partners:
Effective,
challenging and
supportive



When a child leaves our school they will be **READY** to bear fruits

RESILIENT -

Working with Imagine for schools, developing a growth mindset our children will learn to challenge themselves, taking healthy risks without fear of falling short of expectations. Our children will be curious and brave.

EMPATHETIC -

Our children will understand and be sensitive to the needs of others. They will learn to be the best they can be. They will be compassionate and support the needs of one another showing our values of respect, patience and kindness.

AWARE -

Our children will be able to express their ideas and thoughts clearly. They will develop self-awareness, self-respect and self-esteem. They will understand they have a voice and be courageous advocates. They will be able to clearly express their feelings and emotions.

DETERMINED -

We want children to achieve their goals and experience success. They will have a fixed intent to overcome obstacles, using their resilience and being motivated. We will have high aspirations for all our children enabling them to love, learn and grow.

YOURSELF -

Our children will learn to accept their mistakes and grow from them. We will help children to identify their strengths and unique talents. They will be honest and open understanding that no one is perfect but that practise makes permanent.



Our vision shared with our Community

